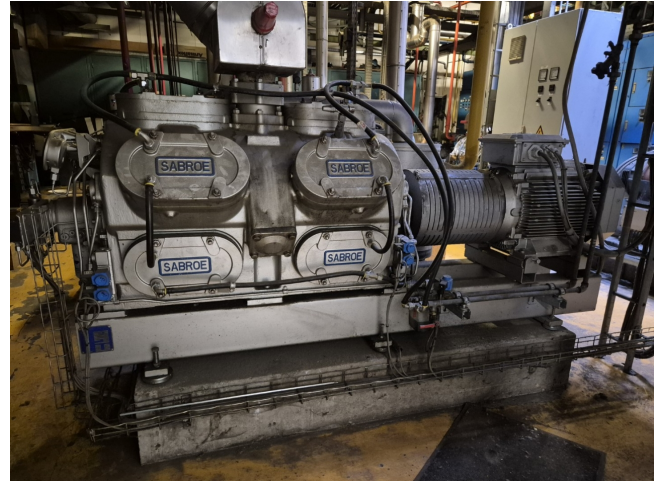


# Sabroe SMC 112 L

## Specifications

Marka	Sabroe
Typ	SMC 112 L
Czynnik chłodzący	NH 3 (ammonia)
kW at +10°C/+40°C	1083,5*
kW at 0°C/+40°C	716,6*
kW at -5°C/+40°C	570,2*
kW at -10°C/+40°C	445,7*
Silnik elektryczny Specs	50 Hz - 45 kW - 1480 RPM
Rozładunek	✓
Kontrolka wydajności	✓
Podstawa na stalowej ramie	✓
Ciśnieniowe przełączniki bezpieczeństwa	✓
Wskaźniki ciśnienia	✓
Separator oleju	✓
Okno widokowe	✓
Zawór elektromagnetyczny	✓
m <sup>3</sup> / h	848
Uwagi	*Capacity based on a bigger electric motor
Stock	1



## Description

### Used Sabroe SMC 112 L

Used Sabroe SMC 112 L reciprocating compressor on R717 (Ammonia). Complete with a ABB M3BP 225 electric motor - 50 Hz - 45 kW - 1480 RPM, oil separator, pressure and safety switches/gauges. The compressor has a displacement of 848 m<sup>3</sup>/h. \*Capacity based on a bigger electric motor. \*Why choose for HOSBV? Were not only the largest used refrigeration specialist in Europe, but also, we deliver all equipment including an extensive test, warranty and industrial cleaning. \*Optional we can also perform a new paint job and arrange the logistics.

